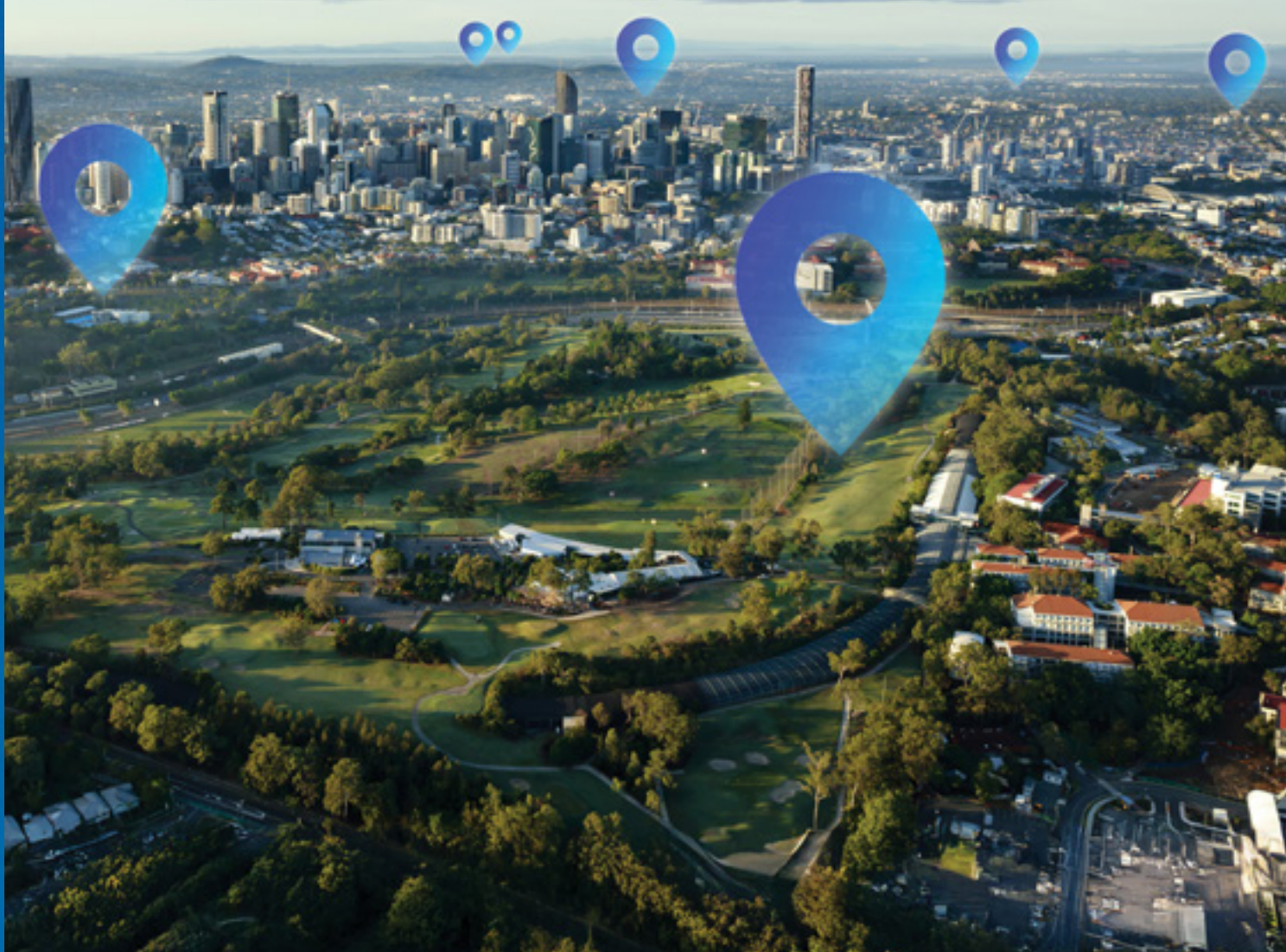


2032 DELIVERY PLAN



**DELIVERING 2032
AND BEYOND**



**Queensland
Government**

CONTENTS

Introduction	04
South East Queensland infrastructure	13
Regional infrastructure	23
Grassroots sporting facilities	26
Tourism	32
Delivering the Plan	33



View the Plan online





Introduction

A PLAN WITH PURPOSE FOR A WINNING LEGACY

In 2032 Queensland will host the Olympic and Paralympic Games in Brisbane and beyond.

This once-in-a-generation opportunity is not only a momentous chapter in Queensland's sporting history, it is also a golden platform to deliver what's needed for Queensland's future, with transport and infrastructure, tourism and grassroots sporting facilities.

It has been more than 1,300 days since Brisbane successfully won the bid for the Games, and following the 100 Day Review, expert-led assessments of infrastructure and transport, stakeholder consultation and community input – the *2032 Delivery Plan* has been set. Queensland is on track to deliver a world-class Games and a golden future.

The *2032 Delivery Plan* is not a sports allocation plan, but an infrastructure delivery plan. It identifies the infrastructure and venues required, demonstrating to the International Olympic Committee that the sports program can be accommodated. It is also a plan designed to benefit the greatest number of Queenslanders as possible, while delivering a successful Olympic and Paralympic Games.

The *2032 Delivery Plan* includes a thriving new sports and entertainment precinct in the heart of Brisbane, where Victoria Park will become home to Brisbane Stadium, a world-class stadium to attract world-class events long after the Games.

Centenary Pool will be transformed into a new state-of-the-art National Aquatic Centre and major upgrades will be delivered at the Queensland Tennis Centre.

The Main Arena at the Brisbane Showgrounds will be upgraded and the precinct will become home to the Brisbane Athletes Village, and later transformed into permanent housing.

Regional Queensland will also be front and centre on the world stage. Major Games venues and hundreds of regional sporting facilities will be upgraded, strengthening the backbone of local communities and nurturing potential home-grown future-Olympians and Paralympians.

To keep our growing population moving, now and beyond 2032, the *2032 Delivery Plan* includes major new public transport connections from the Sunshine Coast through to the Gold Coast, and a generational investment into road connections, including up the spine of our State with a better Bruce Highway.

Queensland tourism will be super-charged with a 20-year plan that takes advantage of Queensland's time on the world stage, with new tourism attractions like eco-tourism experiences and accommodation.

The *2032 Delivery Plan* has put the Games back on track. This is a plan to build much more than what's needed for a few weeks of competition.

This is a plan that builds for Queensland's future. A future Queenslanders can be proud of as we're on the world stage.

So, let the Games begin!



FROM PROCESS TO PLAN TO PROGRESS



Rockhampton Rail Yards

On 21 July 2021, Australians everywhere celebrated the historic moment Brisbane was announced as host city for the 2032 Olympic and Paralympic Games.

Brisbane's estimated cost of venues was \$7.1 billion, funded by the Australian and Queensland Governments under the Brisbane 2032 Olympic and Paralympic Games Intergovernmental Agreement, signed in February 2023.

To ensure Queensland is on track to deliver a world-class Games, in November 2024 the new Queensland Government directed a comprehensive 100 Day Review be undertaken to ensure Queensland was delivering the right projects in the right places with the right governance.

Led by the newly created Games Independent Infrastructure and Coordination Authority, the review assessed the intricate network of critical infrastructure projects required to support the Games, ensuring projects aligned with long-term planning, fiscal and future legacy objectives. Key infrastructure, connectivity, and integration across venues, transport projects and athletes villages were considered as part of the review, under the lenses of deliverability, legacy impact, value for money, and alignment with long-term growth strategies.

The guiding principles of the review included:

- maximising the use of existing venues
- ensuring value is maximised within the agreed funding envelope
- leveraging investment
- bringing focus to legacy opportunities
- looking at integrated planning that delivers beyond the Games
- seeking out benefits for rural and regional Queensland.

As part of the Review, more than 5,800 submissions were received, alongside robust stakeholder consultation and independent assessments. A draft report was delivered to the new Queensland Government on 22 February 2025, ahead of a final report delivered on 8 March 2025, which was publicly released on 25 March 2025. The final report outlined a list of recommendations for the new Queensland Government to consider.

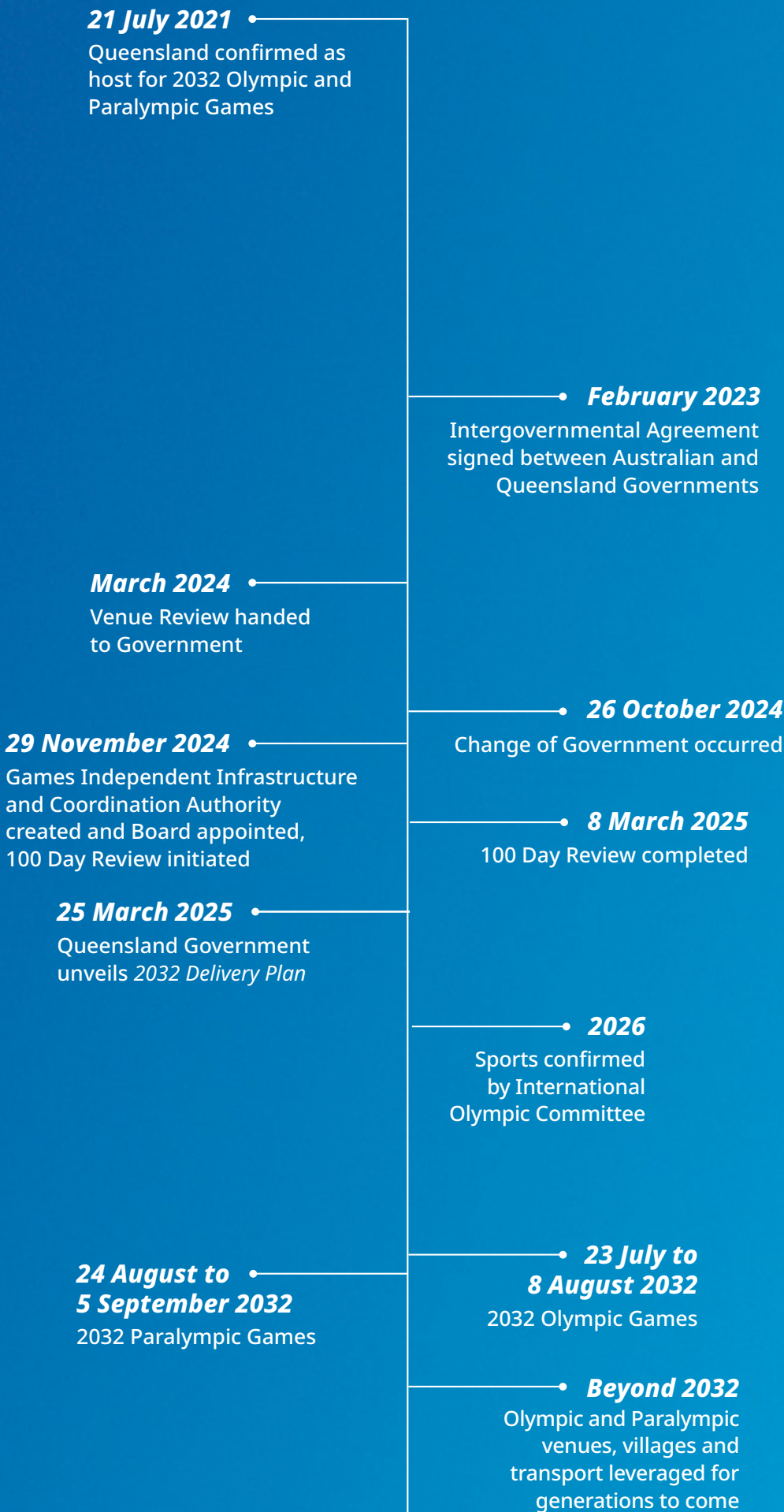
Alongside the review of the final report, the new Queensland Government consulted with the International Olympic Committee, the President of the Brisbane 2032 Organising Committee, the local government host city and the Australian Government, as part of the process for developing the 2032 *Delivery Plan*.

Armed with the 2032 *Delivery Plan*, the focus now shifts to implementing and delivering what is required for 2032 and beyond.



The Wave

QUEENSLAND'S GAMES JOURNEY: WINNING THE BID TO BEYOND





Infrastructure needs for a successful Games

VENUES

Delivery of venue infrastructure is a delicate balance between maximising use of existing spaces, while critically assessing what new venues are needed to truly deliver a world-class experience. Venue infrastructure will be funded within the \$7.1 billion funding envelope, which covers new venues, such as a new Brisbane Stadium, and upgrades to existing venues. The 2032 *Delivery Plan* aims to maximise legacy benefits to Queenslanders from grassroots sports through to high-performance venues.

Existing venues

The International Olympic Committee's 'New Norm' includes more than 100 measures to help make Olympic and Paralympic Games more affordable, beneficial, and sustainable. This policy outlines hosts should use existing venues in the first instance and only propose new venues where no suitable existing option exists, a strong legacy can be demonstrated, and there is compelling community and economic justification for investment.

In response to this policy, the new Queensland Government assessed where events, subject to a final sports program, may be held at existing venues such as:

- Brisbane Entertainment Centre
- Brisbane Football Stadium (Suncorp Stadium)
- Cairns Convention Centre
- Carrara Stadium (People First Stadium)
- Coomera Indoor Sports Centre
- Gabba Cricket Ground
- Gold Coast Convention and Exhibition Centre
- Gold Coast Sports and Leisure Centre
- Gold Coast Stadium (CBUS Super Stadium)
- Harrup Park (Great Barrier Reef Arena)
- Ipswich Stadium (Brighton Homes Arena)
- North Queensland Stadium (Queensland Country Bank Stadium)
- Royal Queensland Golf Club
- State Netball Centre

Venues for Olympians and Paralympians to train at before and during the Games are pivotal for a successful event. Other existing venues are being determined to use for training purposes.

Temporary venues

Outside of new venues and upgrades, temporary venues will be critical and will offer another opportunity to showcase Queensland locations that would not support permanent venues, such as stunning coastline destinations like the Broadwater Parklands on the Gold Coast, or Alexandra Headland on the Sunshine Coast. Disassembled after the Games, temporary venues are often cheaper than a permanent build, ensuring funding is prioritised towards infrastructure that provides a lasting legacy, rather than purpose-built for the Games alone. These venues will be planned and delivered by the Brisbane 2032 Organising Committee in consultation with the International Olympic Committee and the International Paralympic Committee.



ATHLETE VILLAGES

The Games villages represent a central element of the Games planning and athletes' experiences. Three main villages will be located in Brisbane, on the Gold Coast and on the Sunshine Coast, providing accommodation for athletes and team officials. For sports held remotely, alternate accommodation will be used, maximising economic benefits beyond South East Queensland. In total, approximately 16,400 beds will be provided for athletes and team officials during the Games.



The Wave
Artist Impression

TRANSPORT

The new Queensland Government's vision for the Games is to deliver reliable, sustainable and inclusive transport services to Olympic and Paralympic stakeholders and spectators, while advancing the delivery of infrastructure and services to meet community transport needs before, during and after the Games.

Major upgrades to transport and connectivity are required not only for the Games itself, but for Queensland's growing population. More than two million daily trips between venues, accommodation and other destinations will be taken on transport systems, representing a major uplift to current network capacity.

Transport planning and delivery must balance Games-time transport demands and commitments including agreed levels of service and accessibility, while supporting the long-term transport network and service improvement needs.

Several major transport projects either in planning or delivery phases will be accelerated as part of the *2032 Delivery Plan*, including The Wave all the way to the Sunshine Coast Airport, Logan to Gold Coast Faster Rail, Cross River Rail, Brisbane Metro expansion and critical road upgrade projects.

LIVE SITES

Live sites will provide communities with the opportunity to gather and watch the Games, throughout the State. These precincts will enable Queenslanders to watch events live, participate in activities and share the spirit of the Games together. Activated areas will be free to attend and allow the community to participate in the Games without having tickets to an event.



PARA-SPORT LEGACY

Supporting the commitment to maximise legacy opportunities for all Queenslanders, the existing Chandler Sporting Precinct will be upgraded to a dedicated para-sport community facility. Upgrades will include an accessibility overhaul to ensure community-based indoor para-sport can be supported in the lead up to and after the 2032 Games.

Providing a dedicated facility for community-based indoor para-sport activities will also contribute to the pathway for training high-performance para-athletes. This dedicated facility could also integrate allied health services, creating additional legacy benefits for the community.

As para-sport facilities are built, accessibility upgrades and connection to other venues and services will be a critical focus.





Caloundra Station
Artist Impression

South East Queensland infrastructure

With a growing population, South East Queensland needs development that will amplify sporting and event opportunities and get Queenslanders there, home and beyond, safer and sooner.

Victoria Park will become home to Brisbane Stadium, designed to attract world-class events, as part of an exciting new sports and entertainment precinct in the heart of Brisbane.

A new National Aquatic Centre will be developed at the site of the existing Centenary Pool in Spring Hill. Designed as a national hub for Australia's four peak aquatic sports, the Centre will feature a main and secondary stadium, each with large indoor pools to support elite training and competition. The venue will have capacity of more than 25,000 for the Games with a legacy capacity of 8,000.

The Brisbane Showgrounds will also be transformed. As well as housing the Brisbane Athletes Village, an upgrade to the 20,000 seat Main Arena will facilitate the growth of the precinct's key entertainment and events capability, and give the iconic Brisbane Ekka an even brighter future.

A major upgrade of the Queensland Tennis Centre will include a new 3000-seat show court arena and 12 new match courts which, in addition to Pat Rafter Arena, will attract even more world-class tournaments to Brisbane.

Across the city, existing venues will come alive. New indoor sports centres at Logan and Moreton Bay will be delivered, as well as a new whitewater rafting centre in the Redlands.

To get to these places, now and beyond 2032, Queensland will need a better connected and more accessible transport network. For Brisbane, there'll be new rail lines and stations, with new northern and eastern bus priority corridors, and road upgrades, which will get people around a growing city.

From Brisbane to the Gold Coast, faster rail with new stations will reduce commute times, while future upgrades to the Coomera Connector will connect growing cities.

The Gold Coast will host events across a mix of new and existing venues, including a new arena and an upgraded hockey centre to be funded and delivered by the City of Gold Coast, alongside its existing Convention Centre. The region will also be home to the Gold Coast Athletes' Village and will host the triathlon showcasing Queensland's golden beaches.

In Toowoomba, the famous showgrounds will be transformed into an Equestrian Centre of Excellence.

To the Sunshine Coast, Queenslanders will ride The Wave, a new direct rail line running from Beerwah to Birtinya, linking with a state-of-the-art metro hub that will connect to the Sunshine Coast Airport through Maroochydore. The Maroochydore CBD will be transformed with a new integrated athletes village, arena and cultural precinct.



NEW BRISBANE STADIUM

A new stadium with the ability to seat 63,000 spectators will be developed in Victoria Park.

Located centrally in Brisbane, Victoria Park offers a unique opportunity to develop a world-class stadium which will showcase Brisbane on the global stage. Its inner-city location, city views, and ability to integrate within a master-planned park make it an unparalleled choice for an iconic sporting and entertainment venue.

This stadium will be capable of hosting a range of events, such as AFL, test cricket and major entertainment events. Supporting Queensland sports, this venue will also be where future Brisbane Lions, the Brisbane Heat and the Queensland Bulls teams call home.

This new world-class venue will help put Brisbane and Queensland on the map for showcasing major events and talent, well beyond the delivery of the Games, and provides the opportunity to increase the economic and social prosperity of Queensland through increased major event tourism opportunities.

The location has enhanced flexibility for site configuration, which can ultimately balance stadium and park user needs through strategic planning.





QUEENSLAND TENNIS CENTRE UPGRADE

The Queensland Tennis Centre will undergo a major upgrade, delivering a new 3000-seat showcourt arena and 12 new match courts which, in addition to Pat Rafter Arena, will attract even more tournaments to Brisbane.

The Queensland Tennis Centre enhancement will provide significant legacy benefits by addressing growing community demand for tennis court access, and can be further utilised for future major events, including the Brisbane International.



Queensland Tennis Centre, Tennyson

NEW NATIONAL AQUATIC CENTRE AND PRECINCT



National Aquatic Centre, Spring Hill

A new National Aquatic Centre will be developed at the existing Centenary Pool site in Spring Hill.

Designed as a national hub for Australia's four peak aquatic sports, the National Aquatic Centre will feature a main and secondary stadium, each with large indoor pools to support elite training and competition.

The venue will expand to a capacity of more than 25,000 for the Games using temporary seating, surpassing the capacity of La Defense Arena, the swimming venue for the Paris 2024 Games.

The National Aquatic Centre is planned to host the majority of aquatic sports in 2032, supported by the Brisbane Aquatic Centre (Chandler) which will undergo necessary upgrades.

Beyond the Games, the National Aquatic Centre will provide a world-class legacy facility with a permanent capacity of 8,000 seats, delivering long-term benefits for Australia's aquatic sports community.

NEW BRISBANE ATHLETE VILLAGE



Brisbane Athlete Village, Bowen Hills

Located in Bowen Hills, the Brisbane Showgrounds is synonymous with events, and is the landmark destination for the Brisbane Ekka each year.

Sitting within 1.5km from the Brisbane CBD and with close connection to public transport and major road arterials, the Brisbane Showgrounds will be transformed to host the main Athlete Village for the Games.

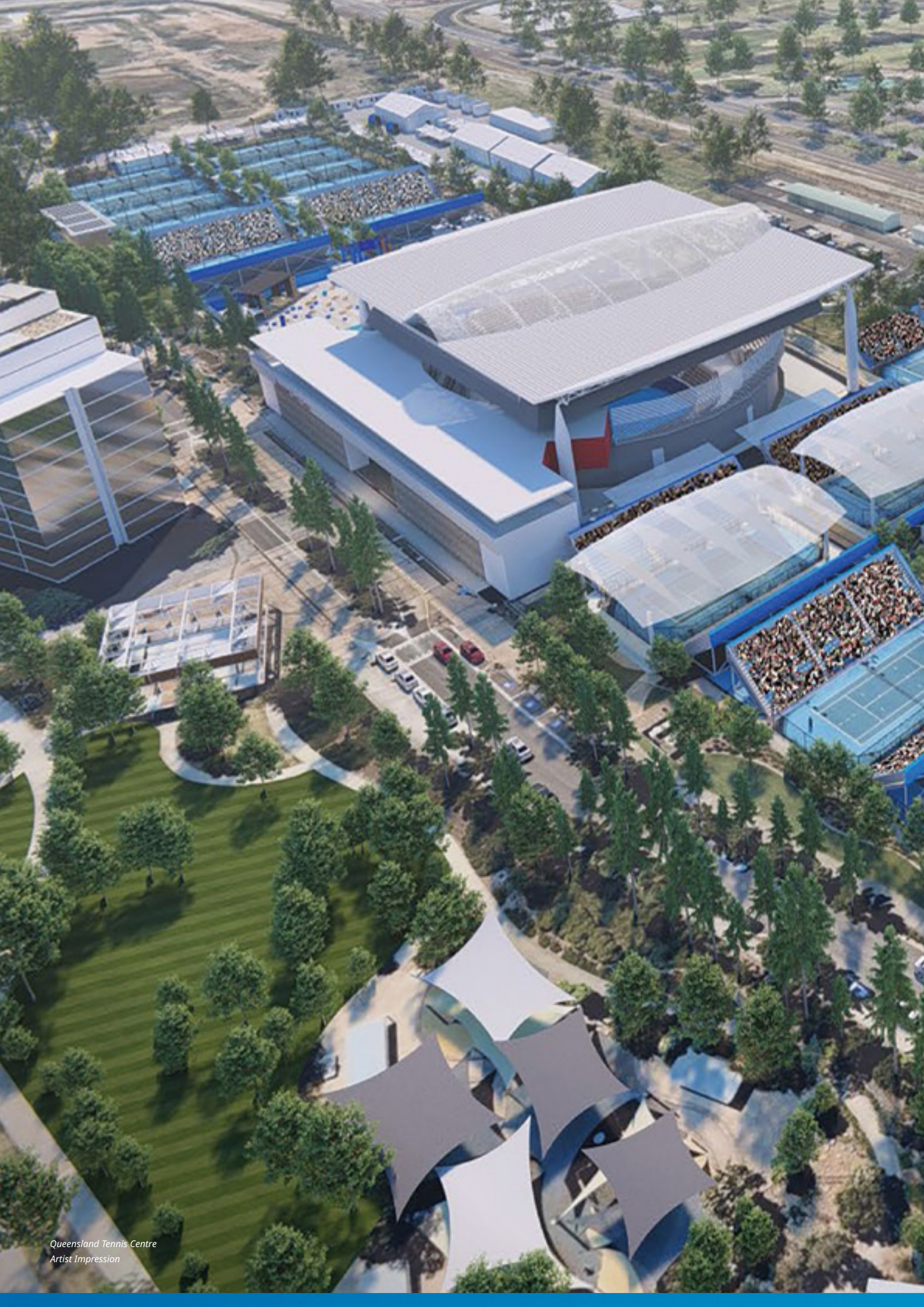
The Brisbane Athlete Village will house more than 10,000 athletes and team officials for the Olympics and more than 5,000 for the Paralympics.

With its proximity to the city, the Village will transform beyond the Games into permanent dwellings, to help meet the demand for housing in our State.

New life will be breathed into the Brisbane Showgrounds. As well as housing the Brisbane Athlete Village, an upgraded 20,000 seat arena will host key events, and give the Brisbane Ekka an even brighter future.

Major South East Queensland infrastructure projects

PROJECTS	LOCATION	DESCRIPTION	USE
Brisbane Athlete Village	Brisbane Showgrounds, Bowen Hills	Sitting within 1.5km from the Brisbane CBD and with close connection to public transport and major road arterials, the Brisbane Showgrounds is primed to be transformed to host the main Athlete Village for the Olympic and Paralympic Games Brisbane 2032, housing more than 10,000 athletes and team officials for the Olympic Games Brisbane 2032 and more than 5,000 for the Paralympic Games Brisbane 2032. The Brisbane Showgrounds is also set to benefit from an upgrade to the 20,000 seat Main Arena.	Village
New Brisbane Stadium	Victoria Park, Brisbane	A new stadium with the ability to seat around 63,000 spectators will be developed in Victoria Park. This new world-class venue will help put Brisbane and Queensland on the map for showcasing major events and talent, well beyond the delivery of the Games, and provides opportunity to increase the economic and social prosperity of Queensland through increased major event tourism opportunities.	Venue
Gold Coast Athlete Village	Gold Coast	The Gold Coast Athlete Village is set to be located within the Royal Pines Resort's development, which is proposed to include the delivery of a high-performance training facility and a masterplan residential development including a mix of housing types.	Village
Sunshine Coast Athlete Village	Maroochydore City Centre	The Sunshine Coast Athlete Village will be located within the Maroochydore City Centre. The CBD will be transformed with a new integrated athletes village, arena and cultural precinct.	Village, Venue
New National Aquatic Centre and precinct	Spring Hill	A new National Aquatic Centre will be developed at the existing Centenary Pool site in Spring Hill. Designed as a national hub for Australia's four peak aquatic sports, the National Aquatic Centre will feature a main and secondary stadium, each with large indoor pools to support elite training and competition. The National Aquatic Centre is planned to host the majority of aquatic sports in 2032, with a capacity of more than 25,000. The Brisbane Aquatic Centre (Chandler) which will undergo necessary upgrades. Beyond the Games, the National Aquatic Centre will provide a world-class legacy facility with 8,000 permanent seats, delivering long-term benefits for Australia's aquatic sports community.	Venue
Logan Indoor Sports Centre	Logan Central, Logan	The Logan Indoor Sports Centre will provide significant legacy benefits by addressing the growing demand for indoor courts in one of the fastest growing areas in Queensland and creating opportunities for future event attraction. Designed as a multisport accessible venue, this community sports centre will provide opportunities for increased participation in a range of indoor sports, including badminton, basketball, futsal, netball and volleyball and para-sports such as sitting volleyball and wheelchair basketball.	Venue
Moreton Bay Indoor Sports Centre	Mill Precinct, Petrie	The Moreton Bay Indoor Sports Centre will deliver a new flexible multisport and events facility for community and event use. This venue will address a growing need for indoor sports facilities in Moreton Bay, supporting increased participation in sports such as basketball, netball, volleyball, badminton, futsal, wheelchair rugby and pickleball. This new facility will also accommodate a broad range of other events, concerts, presentations, conferences and trade shows, enhancing the region's ability to deliver long-term benefits to the local community.	Venue
Sunshine Coast Stadium	Kawana Sports Precinct	The Sunshine Coast Stadium is a well-established venue that is well utilised for rectangular sporting content. Upgrades to the Sunshine Coast Stadium include increasing the size of the stadium from 1,046 to 10,680 permanent seats. These upgrades will increase its ability to host and attract major sporting, recreational and entertainment events and will leave legacy community benefits. The Stadium upgrade will support growing demand for a high calibre sporting venue within the region, and its usage by community and sporting organisations, including the NRL.	Venue
Sunshine Coast Mountain Bike Centre	Parklands Conservation Park, Sunshine Coast	The Sunshine Coast Mountain Bike Centre is a hub for mountain biking and nature-based recreational activities, including nature trails in the Sunshine Coast region. The upgraded centre will support growing demand for mountain-bike facilities and allow for increased training and recreational usage, driving visitation and tourism to the Sunshine Coast.	Venue



Queensland Tennis Centre
Artist Impression



Major South East Queensland infrastructure projects

PROJECTS	LOCATION	DESCRIPTION	USE
Redland Whitewater Centre	Birkdale, Redland	The new Redland Whitewater Centre will be a hub for outdoor recreation, adventure tourism and water-based activities, and provide whitewater sport, international standard events, and emergency response training opportunities, driving increased visitation and tourism to the Redlands. This venue will deliver a competition channel, easy river, lake, and supporting infrastructure, providing long-term legacy benefits for the community as a place for all ages and abilities to enjoy an active outdoor lifestyle. The Centre will be co-located in the future Birkdale Community Precinct, with a public lagoon, cultural centre, walking trails and outdoor stage, being delivered by Redland City Council.	Venue
Queensland Tennis Centre	Tennyson, Brisbane	A major upgrade of the Queensland Tennis Centre will include a new 3000-seat showcourt arena and 12 new match courts which, in addition to Pat Rafter Arena, will bring even more tournaments to Brisbane. The Queensland Tennis Centre enhancement will provide significant legacy benefits by addressing growing community demand for tennis court access, and can be further utilised for future major events, including the Brisbane International Tennis Tournament.	Venue
Toowoomba Showgrounds	Glenvale, Toowoomba	The Toowoomba Showgrounds upgrade will deliver long-lasting benefits to the region and continue to support its strong equestrian legacy and local participation in the sport. The upgrades will have benefit for Games and legacy modes and include additional arenas and warm-up facilities, additional and upgraded stables, new amenities and change facilities as well as an upgraded and lengthened cross country course. This will allow for attraction of equestrian events, delivering economic benefit to the region.	Venue
Brisbane International Shooting Centre	Belmont, Brisbane	The Brisbane International Shooting Centre is an international standard venue that offers four shooting ranges for the small bore rifle, air rifle, and pistol shooting disciplines and a number of complementary multipurpose facilities. The centre is the home base for many of Queensland's community, high performance, and premier shooting clubs, organisations, and hosts a number of community, regional, and international events. Upgrades to the Brisbane International Shooting Centre will focus on increasing the capacity of the indoor range to allow for up to 2,000 temporary spectators and deliver a valuable legacy for the South East Queensland shooting community.	Venue
Para-sport Facility	Chandler Sports Precinct (Sleeman Sports Complex), Chandler	The delivery of a dedicated para-sport facility will provide an important legacy for the community both in the lead-up to and following the Games. This new facility will allow for increased participation in sport and physical activity for people with disability, as well as high performance pathways for para-athletes. An upgrade of the existing indoor arena facility at the Chandler Sports Precinct will be undertaken to house the new para-sport facility.	Venue
Anna Meares Velodrome and Brisbane SX International BMX Centre	Chandler Sports Precinct (Sleeman Sports Complex), Chandler	Both the Anna Meares Velodrome and the BMX Supercross Track are of international competition standard and UCI certified. The Anna Meares Velodrome hosted Cycling (Track) competition during the Gold Coast 2018 Commonwealth Games. The BMX Supercross Track will host the UCI BMX World Championships in 2026, and the Anna Meares Velodrome will host the UCI Track Cycling World Championships in 2030. Minor works are required at both venues to ensure they are fit-for-purpose for the 2032 Games. AusCycling has announced the relocation of its Action and Acceleration Centre of Excellence to the Chandler Sports Precinct based on the high performance cycling infrastructure located at the venue. This investment in cycling facilities within the precinct is expected to provide a strong legacy for the sport.	Venue
New Gold Coast Arena	Gold Coast	The proposed Gold Coast Arena project, fully funded and delivered by the City of Gold Coast, will contribute to the region's long-term community legacy.	Venue
Upgraded Gold Coast Hockey Centre	Gold Coast	The proposed Gold Coast Hockey Centre upgrade, fully funded and delivered by the City of Gold Coast, will contribute to the region's long-term sporting legacy.	Venue
Coomera Connector future stages	Gold Coast	The Coomera Connector will be an alternate road connection between Brisbane and the Gold Coast.	Transport
The Wave	Sunshine Coast	The Wave will allow passengers to travel from Brisbane through to the Sunshine Coast Airport, with a new direct rail line running from Beerwah to Birtinya, linking to a state-of-the-art metro hub that connects to the Sunshine Coast Airport through Maroochydhore.	Transport

Major South East Queensland infrastructure projects

PROJECTS	LOCATION	DESCRIPTION	USE
Cross River Rail	Brisbane	A new 10.2 km rail line with 5.9 km of twin tunnels running under the Brisbane River and CBD and four new underground stations at Boggo Road, Woolloongabba, Albert Street and Roma Street, as well as an upgraded Exhibition station.	Transport
Eastern corridor with a bus priority solution	Old Cleveland Road – Coorparoo to Capalaba	Implement bus priority on the Old Cleveland Road Corridor to reduce journey time and increase reliability for bus services to the eastern suburbs of Brisbane.	Transport
Northern corridor with a bus priority solution	Gympie Road to Kedron to Carseldine	Implement bus priority on the Gympie Road Corridor to reduce journey time and increase reliability for bus services to the northern suburbs of Brisbane and Redlands.	Transport
High Frequency Bus Network	Brisbane	Service improvements to cater for additional demand, including increasing service frequency, reliability and capacity.	Transport
Investigate improvements for airport connectivity	Brisbane Airport	Investigate opportunities to improve public transport access to and within the Brisbane Airport precinct.	Transport
East-west bus priority corridor	Nerang to Broadbeach	Bus priority measures will be implemented to improve east-west connectivity on the Gold Coast between Nerang and Broadbeach.	Transport
East-west bus priority corridor	Robina to Miami project	Bus priority measures will be implemented to improve east-west connectivity on the Gold Coast between Robina and Miami.	Transport
High Frequency Bus Network	Gold Coast	Service improvements to cater for additional demand, including increasing service frequency, reliability and capacity.	Transport
High Frequency Bus Network improvements	Sunshine Coast	Service improvements to cater for additional demand, including increasing service frequency, reliability and capacity.	Transport
Bruce Highway upgrades	Gateway Motorway to Uhlmann Road	Upgrades to the Bruce Highway between the Gateway Motorway and Uhlmann Road to increase capacity and reliability for traffic between Brisbane and the Sunshine Coast.	Transport
M1 Pacific Motorway upgrades	Brisbane to Gold Coast	Future upgrades on the M1 will increase capacity and safety between Brisbane and the Gold Coast.	Transport
Gateway Motorway upgrades	Gateway Motorway	Upgrades to the Gateway Motorway and Bruce Highway interchange at Pine River, the Old Cleveland Road interchange and the Gateway M1 interchange to increase capacity and reliability.	Transport
Plan and deliver a Transport Coordination Centre and systems upgrade	Brisbane	Plan and deliver a multi-modal Transport Coordination Centre, a transport systems upgrade, and a digital capability uplift. This will help to improve management of the region's transport network to improve response to incidents, increase network reliability and reduce travel times.	Transport
Roll out the European Train Control System updates	Sunshine Coast to Gold Coast rail line including the Redcliffe Peninsula	Deliver the European Train Control System (Level 2) on the Sector 1 rail network (Gold Coast to Brisbane CBD to Sunshine Coast), to improve safety and allow for increased service frequencies on this high-demand sector of the rail network.	Transport

Major South East Queensland infrastructure projects

PROJECTS	LOCATION	DESCRIPTION	USE
Transport network updates	South East Queensland and beyond	<p>Transport upgrades include:</p> <ul style="list-style-type: none"> • Increase bus and train fleet manufacturing and procurement - expand the bus and train fleet to cater for the region's population growth, as well as increased transport demand during the Olympic and Paralympic Games. • Upgrade bus depots, handling and layover sites - to cater for a larger bus fleet, new depots and associated facilities will be required. • Expand inner-city and venue active travel corridors - facilitate walking and cycling to Games venues and other key inner-city attractions through targeted infrastructure improvements. • Illuminate and shade inner city paths - increase the attractiveness of walking and cycling routes to improve safety and all-day usability. • Create bike and micro-mobility venue parking - cater for e-scooters and other personal mobility devices through better management of their parking to improve accessibility for footpath users. • Increase the accessible taxi and ride-share fleet - ensure equitable access to transport options through measures such as increasing the number of wheelchair accessible taxis. • Undertake bus and railway stations accessibility upgrades - targeted investment will be made in bus and railway stations to ensure they are accessible and safe for all public transport users. • Implement inclusive wayfinding - making our region easier to navigate will improve the visitor experience and accessibility for all users and promote active transport modes. • Update customer service support programs - increase training for customer service staff to better support people with a disability. 	Transport



Brisbane Showgrounds
Artist Impression



Barlow Park Stadium, Cairns
Artist Impression

Infrastructure for growing regions

The new Queensland Government's vision for this Games has always been to maximise the Games for the whole State.

One of the primary objectives of the 100 Day Review was to maximise long-term benefits, ensuring infrastructure investment supports regional economic development and aligns with broader strategies, including tourism, and delivers lasting benefits for rural and regional Queensland.

The Olympic and Paralympic Games will reach beyond Brisbane, delivering generational infrastructure for the whole State, including a better Bruce Highway, and connections to the regions.

Cairns will be better connected with upgrades to the Western Arterial Road, while welcoming events at the Convention Centre, and an upgraded Barlow Park Stadium.

Townsville will see sailing come to its beautiful waterfront, and football to its world-class stadium, as well as key upgrades north and south on the Bruce Highway.

Rockhampton will host Rowing and Canoe Sprint on the mighty Fitzroy River, with a new athlete village being built at a revitalised rail yards precinct.

In Mackay Whitsundays, extensive upgrades to the Bruce Highway at Goorganga Plains will help a growing region stay connected and host cricket at an upgraded Harrup Park. The beautiful Whitsundays will also co-host sailing.

Maryborough will host Archery, and the Wide Bay will see major improvements including the Bruce Highway with the new Tiaro Bypass and upgrades at Walker Street.

BARLOW PARK STADIUM UPGRADES

Barlow Park is Cairns' premier football and athletics facility, made up of two rectangular fields, an IAAF-standard athletics track with grassed field, long jump pits, grandstand, and more.

The Barlow Park Stadium will receive major upgrades with increased seating capacity and spectator facilities, including a new grandstand with a permanent seating capacity of 5,000 seats.

These upgrades will deliver lasting legacy benefits to the growing Cairns region, putting Cairns in the box seat to attract major event hosting opportunities, such as the NRL, which will have flow-on impacts to the local tourism economy.



UPGRADING THE BRUCE HIGHWAY

The Bruce Highway is the State's transport spine and the lifeblood of regional Queensland, connecting communities between Brisbane in the south and Cairns in the north.

The Bruce Highway Upgrade and Targeted Safety Programs will see investment in excess of \$9 billion that will improve safety, capacity and flood resilience.

Key regional Bruce Highway Upgrades include:

- Tiaro Bypass – a new four lane bypass to increase flood immunity, safety and efficiency.
- Rockhampton Ring Road – 17.4 kms of new roadway providing a western link of the Bruce Highway including a new crossing of the Fitzroy River. The project will improve connectivity to priority facilities, services and precincts in Rockhampton by increasing the number of access points to the city.
- Goorganga Plains - improve Bruce Highway flood immunity and improve safety at the Goorganga Plains and Myrtle Creek, near Proserpine.



Regional Queensland infrastructure projects

PROJECTS	LOCATION	DESCRIPTION	USE
Barlow Park	Cairns Major Events Precinct	The Barlow Park Stadium will receive major upgrades to the existing sporting venue, deliver lasting legacy benefits to the Cairns region by increasing the seating capacity and spectator facilities. These upgrades include a new grandstand with a permanent seating capacity of 5,000 seats and will support Cairns to attract major event hosting opportunities, such as the NRL.	Venue
Athlete Village	Rockhampton	Athlete accommodation to be delivered as part of a new Rockhampton Railyards Rejuvenation precinct project.	Village
Bruce Highway	Cairns, Rockhampton, Mackay and Whitsundays	The Bruce Highway Upgrade and Targeted Safety Program will see the investment of in excess of \$9 billion on safety enhancements, capacity upgrades, flood resilience, wide centre line treatments, intersection upgrades, pavement strengthening and additional rest areas.	Transport
Bruce Highway	Tiaro Bypass	A new four lane bypass of Tiaro to increase flood immunity, safety and efficiency of the Bruce Highway.	Transport
Bruce Highway	Rockhampton Ring Road	Delivering 17.4 kms of new roadway providing a western link of the Bruce Highway including a new crossing of the Fitzroy River. The project will improve connectivity to priority facilities, services and precincts in Rockhampton by increasing the number of access points to the city.	Transport
Bruce Highway	Goorganga Plains	Improve Bruce Highway flood immunity and improve safety at the Goorganga Plains and Myrtle Creek, near Proserpine.	Transport
Cairns Western Arterial Road	Redlynch Connector Road and the Captain Cook Highway	The project will involve upgrades to the Cairns Western Arterial Road between Redlynch Connector Road and the Captain Cook Highway to improve travel times and reliability.	Transport
Townsville Connection Road	University Road and Bowen Road Bridge	The Townsville Connection Road is being upgraded to dual lanes between University Road and Bowen Road Bridge.	Transport
Rowing Facility	Rockhampton	Upgrades to the existing Fitzroy River course will be delivered to host Rowing and Canoe Sprint events for the 2032 Games. The venue is home to the Rockhampton Fitzroy Rowing Club and is widely used by local schools, including The Cathedral College and Rockhampton Grammar School. The facility currently supports training, local regattas, and state championships, as well as serving as a national team training camp. Planned upgrades will include enhanced permanent infrastructure and amenities, ensuring a lasting legacy for the rowing community.	Venue



Supporting grassroots sports

Sport is the heart of Queensland communities, keeping people connected and delivering benefits far beyond the game.

Queensland has a proud history of producing Olympians and Paralympians, many of whom hail from regional Queensland. The next generation of Queensland athletes need the opportunity to train and compete in high quality venues to grow their skills.

Grassroots sports facilities across the State will benefit from enhancements, including upgrades to Perry Park and a contribution to the home of football.

The new Queensland Government's Games On! program is a commitment to enhancing regional sporting and community facilities to give our next generation of athletes the best chance of success. Leading into 2032, Games On! will deliver new or upgraded fields and courts, changerooms or lighting, and clubhouse enhancements to hundreds of Queensland facilities across every corner of the State.



Barlow Park Stadium, Cairns
Artist Impression



GAMES ON! AND MORE TO COME

- Airlie Beach Bowls Club
- Aspley Hornets Football Club
- Aspley Memorial Bowls Club
- Aspley Scout Den
- Baringa Football Club
- Beachmere Sports Club Complex
- Beerwah Golf Club
- Bluebirds United Football Club (Rockhampton)
- Bowen Seagulls Rugby League Club
- Bracken Ridge District Cricket Club
- Bramble Bay Bowls and Sports Club
- Bribie Districts Little Athletics Club
- Bribie Island Netball Club
- Bribie Island Strength and Movement Club
- Bribie Island Surf Club
- Brookfield Horse and Pony Club
- Brookfield Showgrounds
- Brothers Junior Rugby League Football Club (Stafford)
- Brothers Rugby Club (Albion)
- Bundaberg Netball Association
- Burdekin Netball Association
- Burleigh Heads Mowbray Park Surf Life Saving Club
- Burnett Bowls Club
- Burpengary Jets Rugby League Football Club
- Callide Dawson Pistol Club
- Calliope Football Club
- Caloundra Rugby Union Club
- Caloundra Senior Rugby League Club
- Capricorn Coast Netball (Barmaryee Sports Complex)
- Carrara Saints Football Club
- Centenary Stormers Football Club
- Clermont Swimming Centre
- Coolum State High School AFL precinct
- Coomera Colts Football Club
- Coomera Cubs Baseball Club
- Coomera Hope Island Cricket Club
- Coorparoo Junior AFL Club
- Cornubia Park Netball Association
- Cornubia Park Sport Precinct
- Cungulla Fishing and Social Club
- Currimundi United Football Club
- Currumbin Eagles Rugby League Football Club
- Dayboro Scout Hall
- Dicky Beach Surf Club
- Dolphins Football Club (Bucasia)
- Easts Rugby Union Club
- Eimeo Surf Life Saving Club
- Emerald All Sport Facilities Foundation
- Everton Park Roosters Rugby Union Club
- Ferny Hills State School
- Gin Gin Athletics Club
- Glenmore Bulls AFL Club
- Gold Coast Suns Training Academy
- Gold Coast United Football Club
- Gracemere Junior Rugby League Club and Gracemere Netball
- Grange Thistle Football Club
- Greenwood Park Sporting Complex
- Harrup Park - Great Barrier Reef Arena
- Helensvale Scouts
- Hermit Park Tigers AFL Club
- Hervey Bay Bombers Football Club
- Hervey Bay Hockey Association
- Highfields and Districts Netball Association
- Holland Park Hawks Football Club
- Honeyeater Park Sports Precinct (Upper Kedron)
- Ingham Tennis Court Complex
- Ipswich Musketeers Baseball Club
- Jabiru Park (Condon)
- Jandowae Community Sports and Recreation Grounds
- Kalbar Showgrounds
- Karana Downs Pony Club
- Karana Scout Group
- Kawana Waters Surf Life Saving Club
- Kenmore Bears Junior AFL Club
- Kenmore Districts Rugby Club
- Kenmore Girls Guides
- Kenmore Scouts
- Labrador Tigers Football Club
- Les Hughes Sports Complex

- Lindsay Williams Oval (Wandoan)
- Logan Thunder
- Longreach Showgrounds
- Mackay Football Park
- Mackay Hockey Association
- Mackay Netball Association
- Magic United Soccer Club (Carrara)
- Manunda Sports Precinct
- Maroochydore Rugby Union Club
- Mitchelton Football Club
- Mitchelton Youth Club
- Moggill Football Club
- Moggill Girls Guides
- Moggill Scouts
- Moggill Mustangs Junior AFL Club
- Moggill Pony Club
- Moorooka Clubhouse
- Moreton Bay Boys' Brigade
- Mount Crosby Bowls Club
- Mount Gravatt Girl Guides
- Mount Isa Rodeo
- Nerang BMX Club
- Nerang Roosters Rugby League Club
- Noosa Little Athletics
- Noosa Pirates Rugby League Club
- Noosa Touch Club
- Norths Rugby Club (Brisbane)
- North Lakes Kangaroos Rugby League Club
- North Mackay Saints AFL Club
- North Star Football Club
- Northern Beaches Bowls Club
- Norths Tigers Ipswich Senior Rugby League Football Club
- Norths Tigers Junior Rugby League Club
- Ormeau Football Club
- Pacific Pines Australian Football Club
- Pacific Pines Hawks Cricket Club
- Palm Beach Surf Lifesaving Club
- Palmwoods Warriors Football Club
- Pelican Waters Bowls Club
- Peninsula Power Football Club
- Pimpama PCYC (new)
- Pine Rivers Football Club
- Pine Rivers PCYC
- Pine Rivers Swans AFL Club
- Point Lookout Surf Life Saving Club
- Queens Park, Ipswich
- Redcliffe Dolphins Soccer Club
- Redcliffe Tigers AFL Club
- Redlands Cricket Club
- Rockhampton Sports Precinct
- Roma Pool
- Rosewood Showgrounds
- Runaway Bay Cricket Club
- Sandgate Hawks Australian Football Club
- Sarina Swim Centre
- Seeonee Park Scout Camp
- Serbian Australian Community Centre
- Slacks Creek Rugby League Club
- Souths Acacia Ridge Rugby League Club
- Souths Rugby Union Club (Yeronga)
- Souths Sunnybank Rugby League Club
- Tallebudgera Surf Life Saving Club
- Tamborine Mountain Sports Association
- Tewantin Noosa Tennis Club
- Thomson River Rowing Facility
- Tugun Seahawks Rugby League Football Club
- Tugun Surf Life Saving Club
- UQ Football Club
- Valley's Football Club (Grange)
- Wellington Point Bowls Club
- West Leagues Club Mackay
- Western Suburbs Cricket Club (Townsville)
- Whitsundays Brahmans Rugby League Football Club
- Wide Bay Sports Academy
- Wilston Grange AFL Club
- Wooroolin skate park (new)
- Yarawa Pony Club

This is just the start. These projects have already been committed to by the new Queensland Government. The Games On! program is set to expand to benefit even more community clubs before 2032.

Hockey Centre, Gold Coast
Artist Impression







Super-charging home-grown tourism

Queensland is set to benefit from a \$4.6 billion increase in tourism and trade, under the global spotlight of the Games. Half of all international visitors attending the Games are expected to holiday through regional Queensland during their stay, kickstarting a lasting tourism legacy.

By 2032, more visitors will fly directly into Queensland from around the world than ever before. Our home-grown tourism experiences like Australia Zoo and eco-tourism experiences including the Airlie Beach SkyWay in the Whitsundays, and Wangetti Trail spanning from Palm Cove to Port Douglas, will be major drawcards for international visitors.

In the run-up to the Games, there will be the opportunity to showcase Queensland on the global stage. Teams from around the world will come to Queensland to train and acclimatise. Cultural and arts programs will be delivered and the torch relay will showcase the many beautiful locations around Queensland. During the Games live sites around the state will enable communities to gather and celebrate together.

Beyond the Games, the private sector will help transform the Gabba precinct with a new arena and more housing for Queenslanders, ensuring Queensland maximises the tourism legacy opportunities. This entertainment precinct will open the door to bigger and better sports and entertainment beyond 2032.

DESTINATION 2045: THE 20-YEAR TOURISM PLAN

Before Queensland opens its doors to the world, we must ensure our backyard is ready with world-class tourism offerings.

Destination 2045: Queensland's Tourism Future is a 20-year plan under development, to harness our beautiful beaches, waterways, rainforests, bush, towns and more, as well as identify and deliver new tourism offerings across the State.

The plan will focus on:

- ecotourism
- 2032 legacy
- investment attraction
- tourism experience development
- access and connectivity
- events delivery.

With the eyes of the world on our State, the Games is a golden opportunity to boost Queensland's visitor economy for decades to come. Destination 2045 will ensure we can maximise this opportunity.



Putting the plan into action

National Aquatic Centre, Spring Hill
Artist Impression

With the 2032 Delivery Plan, Queensland is on track to deliver a world-class Games and a golden future.

The 2032 Delivery Plan is the result of a defined process, which has included the 100 Day Review, expert-led assessments of infrastructure and transport, government and stakeholder consultation, and community input.

This is a plan not only from here until 2032 to deliver the best Games for Queensland, but it is a plan **to** deliver benefits across the State far beyond 2032.

The Plan has been set for a Games like no other – a Queensland Games – that people across the State can celebrate for generations to come. Now, the Queensland Government commences delivering it.

GOVERNANCE

The Queensland Government will strengthen whole-of-Games governance by reconstituting existing leadership groups to support efficient and effective cross-partner decision-making and oversight.

A whole-of-Games governance structure designed to support the Games ecosystem will be established, allowing decision-making to occur across multiple entities while upholding, and not superseding, the corporate decision-making rights of each Games entity.

The Governance Structure will be modelled on the Future State Governance diagrams provided in the 100 Day Review Final Report, including the establishment of the Games Leadership Group, chaired by the Minister responsible for the Games and the Games Executive Group.

The Queensland Government will focus governance and accountabilities to oversee the Government's role in hosting a successful Olympic and Paralympic Games Brisbane 2032, and coordinate effort across Queensland Government agencies to facilitate clear, expedited decision-making on Games-related matters of importance to the State.

The Queensland Government will engage collaboratively with the Brisbane 2032 Organising Committee and other Games Delivery Partners on the development of the whole-of-Games vision, streamlining membership of the Brisbane 2032 Organising Committee's Board and enhancing its decision-making capability.

ROLES AND RESPONSIBILITIES

Queensland Government	<p>Responsibility for other Games related matters to be retained by existing agencies of the Queensland Government and the Brisbane 2032 Organising Committee, including:</p> <ul style="list-style-type: none"> • Department of State Development, Infrastructure and Planning – delivery of the Games Villages Program, infrastructure portfolio coordination, monitoring and reporting of the Games infrastructure program including venues, villages and transport programs. For the Venues program, the department also facilitates investment decisions, administers the Intergovernmental Agreement (IGA) and Federation Funding Agreement (FFA) with the Australian Government, and facilitates approval pathways to enable the Games Independent Infrastructure and Coordination Authority (GIICA) to deliver new and upgraded venues in line with government commitments. • Department of Sport, Racing and the Olympic and Paralympic Games – Games portfolio coordination for Queensland Government entities, preparation of a Games Coordination Plan, Chair and secretariat for senior Queensland Government and cross-partner Games Governance Groups, management of the Queensland Government's Games budget, and coordination of the Legacy program and associated funding. • Department of Transport and Main Roads – preparation of a Games transport and mobility strategy and delivery of the resultant Games transport and mobility programs, including coordination with Games Delivery Partners as required. • Queensland Police Service – lead the planning and delivery of the safety and security function for the Games in collaboration with other Games Delivery Partners. • Other Queensland Government agencies (e.g. Queensland Health, Queensland Ambulance Service, Queensland Fire Department, Department of Primary Industries, Trade and Investment Queensland and Arts Queensland) – prepare for and deliver Queensland Government services required to support the successful delivery of the Games. • Brisbane 2032 Organising Committee – coordination of the delivery of the Olympic and Paralympic Games Brisbane 2032, including aspects such as sponsorship, ticketing, broadcasting, ceremonies, temporary venues, and logistics. • Games Independent Infrastructure and Coordination Authority (GIICA) – delivery on behalf of Government of new and upgraded venues to be used during the 2032 Games.
Australian Government	<p>Games Delivery Partner and funding partner for venues and transport.</p>
Local Councils (including Brisbane City Council, Gold Coast Council and Sunshine Coast Council)	<p>Delivery of some venues, city readiness and city activations, local transport solutions and crowd management, cleaning and waste services, visitor services.</p>



Acknowledgement of Country

The Queensland Government respectfully acknowledges the First Nations peoples in the State of Queensland and the cultural and spiritual connection Aboriginal and Torres Strait Islander people have with the land and sea.

2032 Delivery Plan

Published by the State of Queensland

© State of Queensland (Department of the Premier and Cabinet) March 2025

For more information contact

Department of the Premier and Cabinet
GPO Box 15185, Brisbane QLD 4001

Disclaimer

The content presented in this publication is distributed by the Queensland Government as an information source only. The State of Queensland makes no statements, representations or warranties about the accuracy, completeness or reliability of any information contained in this publication. The State of Queensland disclaims all responsibility and all liability (including without limitation for liability in negligence) for all expenses, losses, damages and costs you might incur as a result of the information being inaccurate or incomplete in any way, and for any reason reliance was placed on such information.

2032 DELIVERY PLAN

The 2032 Games will deliver the largest infrastructure investment in Queensland's history.

And now, the Queensland Government has set the plan to deliver it.

 2032 DELIVERY PLAN



View the
Plan online



Queensland
Government